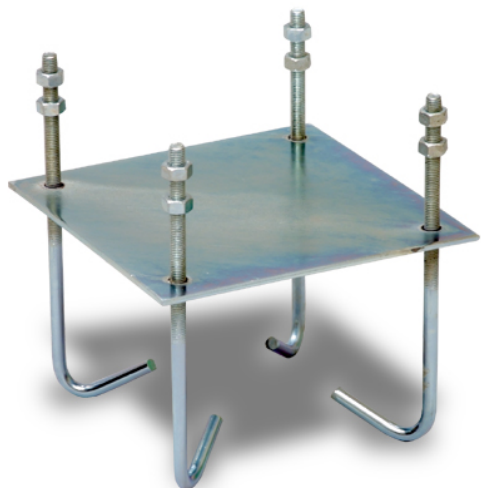


# 998 MECHANICAL ACCESSOIRES

## EMBEDDED DISH BASE (4X150MM)



Code : **9980018**

Model : **BE-201**

### Description

Chimney clamp to fix the mast to a chimney which is held firmly in place by means of a wire rope which goes around the chimney and a system of turnbuckles.

### Applications

Used as an alternative to wall brackets in installations which do not require very long masts. It allows antennas to be installed without having to carry out any work to the façade of the building.

### Characteristics

Made from round zinc-coated iron tube of  $\text{Ø}30 \times 1.5$  mm and L-shaped profiles with a system of two long M8 turnbuckles. M8 clamps for  $\text{Ø}50$  mm masts.

# 9980018

## BE-201

Units per packaging	1
Packing weight	2,60 Kg
Packing dimensions	280 x 200 x 200 mm