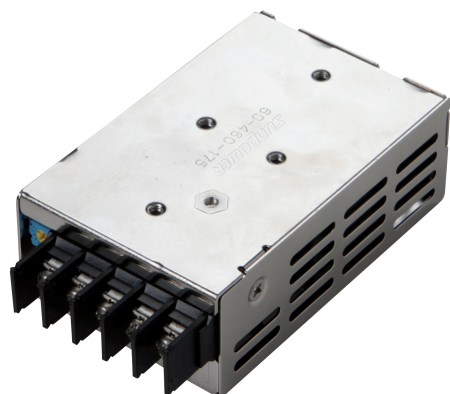


940

CONTROLLERS

POWER SUPPLY 24V-1A DIN RAIL



Code : **9400010**

Model : **FAC-050**

Description

Power supply for the Room Control Panel (CHC-xxx). It converts the main alternating current 220 AC into 24 V DC with a maximum current of 1A. It allows the connection of 1 unit CHC-xxx providing the necessary energy for the correct operation of the system. DIN rail installation. It is unaffected by electrical disturbances on the network. It complies with European Standards EN60950-1 and EN50178.

SPECIFICATIONS

Output power	24 W
Output voltage	24 V
Maximum output voltage	1 A
Dimensions	92 x 51 x 28 mm
Protection index	IP 20
EMC (Emissions)	EN 61000-6-3
EMC (Immunity)	EN 61000-6-2
Weight	180 g
Mounting	DIN rail or wall