

# 940 CONTROLLERS

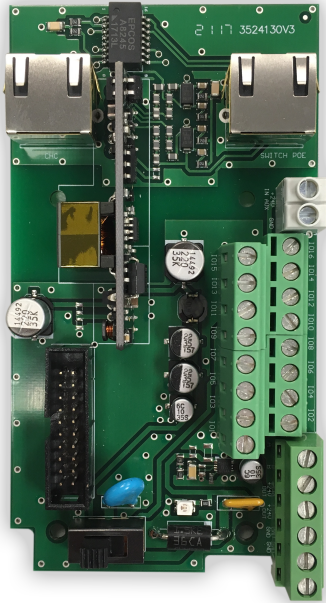
## ACCESSORY POE FAMILY CHC-2XX

Code : **9400046**

Model : **ACC-048**

### Description

The connection accessory ACC-048 allows us to connect different peripherals with the touch room post CHC-2xx. In addition, it is compatible with PoE technology (Power over Ethernet), allowing to power the room post and the peripherals from the same Ethernet cable used for data.



<b>CÓDIGO-CODE-CODE</b>		<b>9400046</b>
<b>MODELO-MODEL-MODÈLE</b>		<b>ACC-048</b>
<b>CARACTERÍSTICAS TÉCNICAS / TECHNICAL CHARACTERISTICS / CARACTÉRISTIQUES TECHNIQUES</b>		
Alimentación PoE POE supply Alimentation PoE	Clase 0 compatible IEEE 802.3af Class 0 IEEE 802.3af compliant Classe 0 conforme IEEE 802.3af	
Voltaje de entrada PoE PoE input voltage Voltage d'entrée PoE	36 – 57 Vdc	
Voltaje fuente de alimentación externa External power supply voltage Voltage d'alimentation externe	POE / 24VDC	
Potencia de salida Output power Puissance de sortie	12,95 W max	
Cable Ethernet Ethernet cable Câble Ethernet	Cat 5 o superior 2xRJ45 Cat 5 or higher 2xRJ45 Cat 5 ou supérieur 2xRJ45	
Temperatura de funcionamiento Operating Temperature Température de fonctionnement	5 - 55°C	