

# 967 TOP MODULAR ENTRANCE PANELS

---

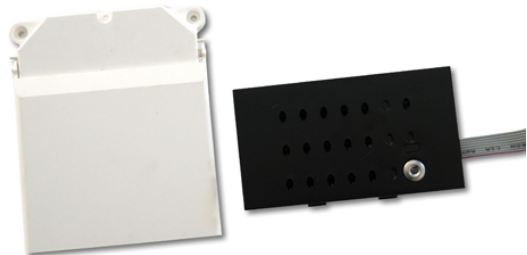
MOD.2-WIRE P.BUT.AUD.UNIT EXT.ENT IBLACK

Code : **9670201**

Model : **MAN-503**

## Description

Module for iBLACK pushbutton panel window. The GRF-304 audio unit and the RVE-035 loudspeaker module are included.



## 9770120 RVE-035 Description

Module with loudspeaker and microphone for entrance panel. It has a voice synthesizer in 14 languages for the "Open door" message. It has an 8 ohm speaker with plastic membrane to prevent deterioration over time in outdoor conditions.

## Entrance panel

Modular entrance panel system consisting of pushbutton modules with a smoothly contoured exterior. These modules incorporate either one or two windows to house different upper modules, e.g. module with audio unit, module with video unit, etc.