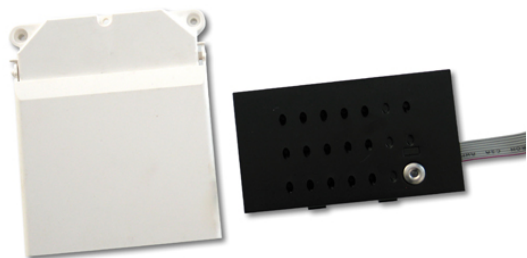


# 967 TOP MODULAR ENTRANCE PANELS

MOD.2-WIRE P.BUT.AUD.UNIT EXT.ENT IBLACK

Code : **9670168**

Model : **MAN-501**



#### Description

Module for iBLACK pushbutton panel window. The GRF-304 audio unit and the RVE-014 loudspeaker module are included.

#### 9610048 GRF-304 Description

Audio unit module 2-wire system. In this system, the audio unit is a separate module from the loudspeaker and the microphone. This allows locating the device in the bottom of the flush-mounted box of the entrance panel, thus protecting the most important electronics of the system. It is used in external entrance panels of a housing compound.

#### 9770035 RVE-014 Description

Module with loudspeaker and microphone for entrance panel. It has an 8 ohm speaker with plastic membrane to prevent deterioration over time in outdoor conditions. Also, the robustness of the electret-type microphone against humidity and heat make this module a virtually indestructible assembly.

#### Entrance panel

Modular entrance panel system consisting of pushbutton modules with a smoothly contoured exterior. These modules incorporate either one or two windows to house different upper modules, e.g. module with audio unit, module with video unit, etc.