

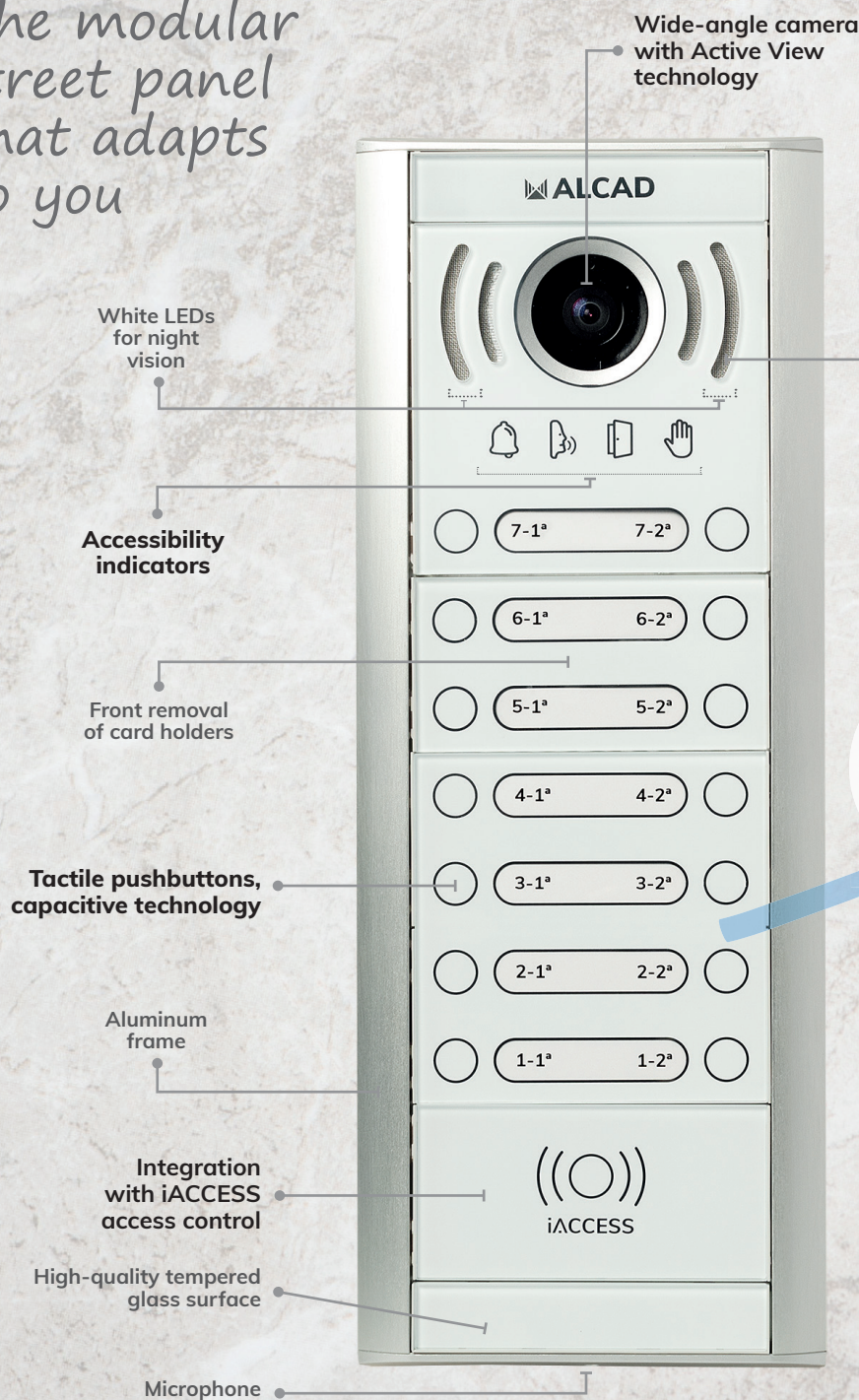
DOOR ENTRY SYSTEMS

Video and audio intercom | Access control
Home automation



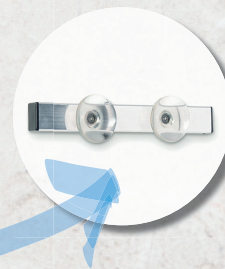
Usaa street panel

*The modular
street panel
that adapts
to you*



*Colours as
you had never
seen before*

USOA offers you total freedom of choice of modules to create personalized compositions, with an innovative aesthetic.

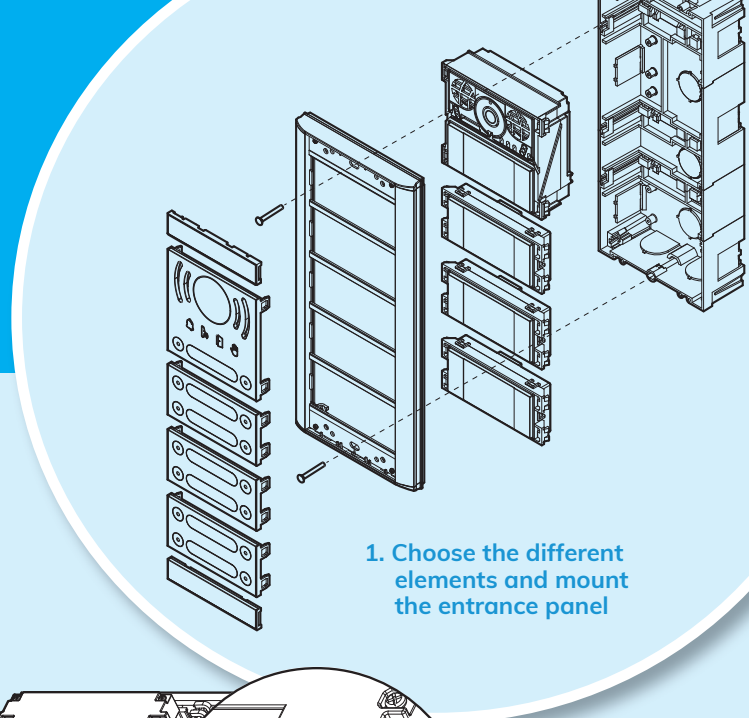


The front extraction tool (9730106 / HST-002) is essential for disassembly of the entrance panel.

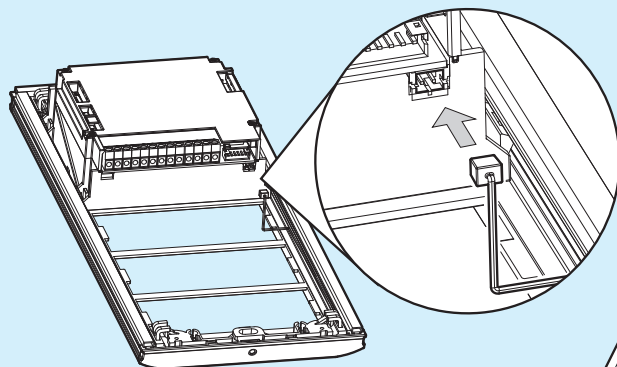
Characteristics:

- It is created from the **combination of different pieces**, such as racks of different sizes and modules to cover different needs: pushbuttons, card holders, access control, etc.
- **Voice synthesizer** in 14 languages.
- Front audio **adjustment**.

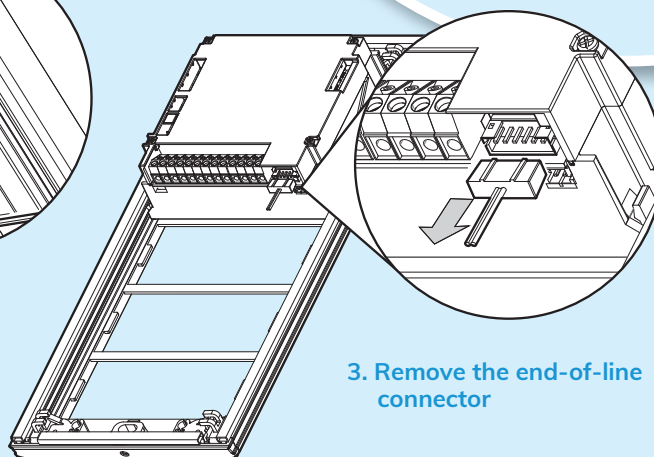
www.alcadelectronics.com



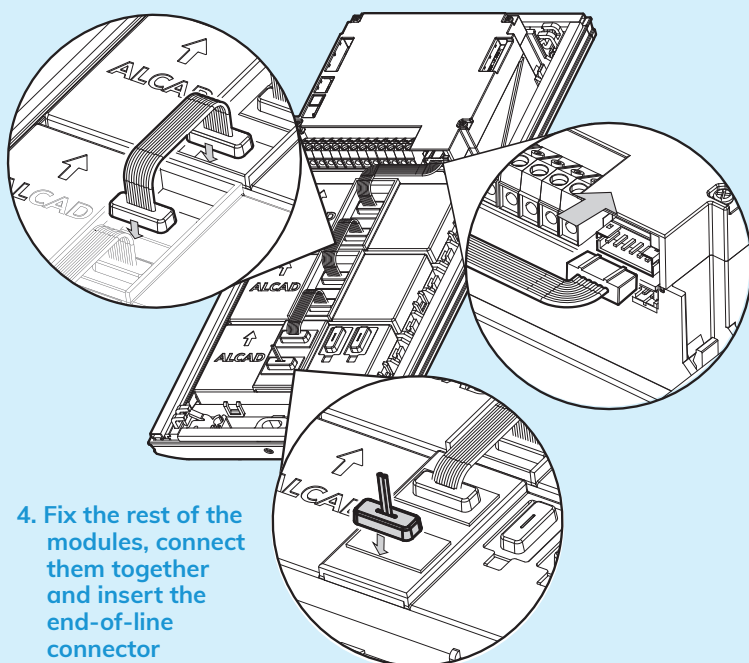
1. Choose the different elements and mount the entrance panel



2. Attach the main module and connect the microphone



3. Remove the end-of-line connector



4. Fix the rest of the modules, connect them together and insert the end-of-line connector

A simple start-up

In order to simplify as much as possible the commissioning of a USOA entrance panel, we have not left any detail to chance. And once you have all the modules connected to each other, you will only have to customize it:

- On the front, place the **identification cards** of the pushbuttons.
- **Voice messages:** select the language and spoken messages.
- **Main module:** adjust the light sensor; the illumination of the card holders and the camera with active communication; the anti-fog system with heater and the audio.